

Hospitality Manufacturing — Made Predictable at Scale.



MANDY LI[®]
C O L L E C T I O N

Making **Your Designs** Come to Life



Trusted by Leading Hospitality Brands

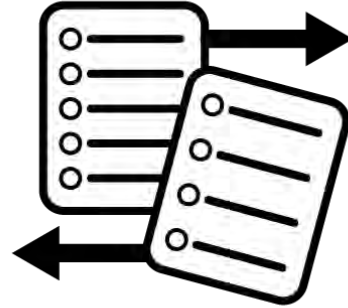
Disciplined execution. Clear communication. Reliable delivery.



Execution Risk is the Greatest Threat to any Project



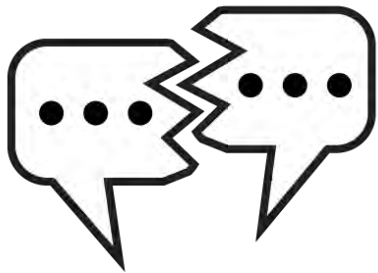
Delayed Approvals



Spec Drift



Quality Inconsistency



Communication Gaps



Shipping Surprises



Installation Challenges

Predictability beats promises.

Partnership beats transactions.

Trust is earned through performance.



Not All Manufacturers Operate the Same Way

Typical Manufacturer

- Reactive
- Capacity-driven
- Limited visibility
- End-stage quality checks
- Price-led

Mandy Li Collection

- Structured execution
- Proactive control
- Transparent milestones
- Embedded quality discipline
- Partnership-driven

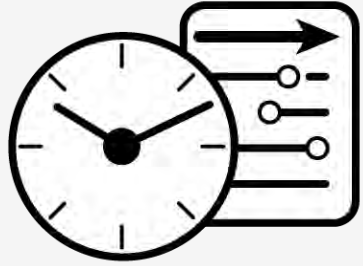


Great Projects Don't
Happen by Accident.



They Are Controlled.

Disciplined Execution. Predictable Outcomes.



**Critical timeline
issued immediately
after purchase order**



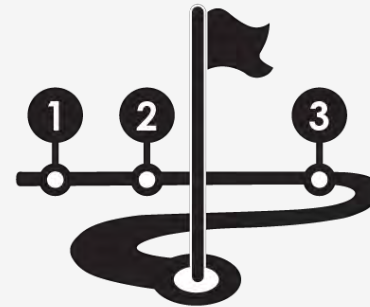
**Shop drawings
engineered to
prevent surprises**



**Finish & material
sign-offs before
production**



**Active COM
tracking**



**Structured
milestone
reporting**



Risk is actively managed — not reacted to.

Where Projects Typically Break Down — We Lean In.

Schedule Pressure



Managed Through Structured Timelines

Spec Drift



Prevented Via Disciplined Approvals

Quality Inconsistency



Controlled Through Embedded Inspections

Supply Chain Disruption



Mitigated Through Diversified Manufacturing

Unexpected Needs



Supported By QuickShip Capability



Strategic Manufacturing – Built for Stability

Diversified production footprint

Vietnam + China capability

Capacity without dependency

Adaptable as global conditions evolve



One Partner. Total Scope Control.



Casegoods
Seating
Vanity
Millworks
Stone
Metal
Custom



Integrated execution reduces coordination risk.





Speed Without Sacrificing Standards

Strategically positioned inventory available on accelerated timelines, built to the same commercial standards as our custom programs.

- Schedule recovery
- Renovations
- Model rooms
- Expansion phases

Fast should never mean lower standards.







WALDORF
ASTORIA



Trusted by Leading Brands, Chosen Again and Again



Clients choose Mandy Li Collection because we:

Anticipate challenges

Communicate clearly

Execute reliably

Stand behind our work



Choosing the right partner protects against:

- Opening delays
- Field corrections
- Replacement costs
- Brand damage
- Owner escalation

Execution mistakes are always more expensive than doing it right the first time.

**Many Manufacturers
Make Furniture.**



**Few Make Projects
Predictable at Scale.**

When Execution Matters, Clients Choose Mandy Li Collection.



We don't just deliver furniture. We deliver confidence.



“ “ At Mandy Li Collection, our responsibility extends beyond manufacturing, we safeguard our clients’ projects, timelines, and reputations.

— Mandy Li

Product Showcase

- Execution
- Quality
- Delivery



MANDY LI®
C O L L E C T I O N

Making **Your Designs** Come to Life

From Design to Production – Delivered with Precision



One Rangers Way
Arlington, TX



Thompson Hotel
Dallas, TX



Arizona Biltmore – A Waldorf-Astoria Resort
Phoenix, AZ

Four Seasons
Kyoto, Japan



Turtle Bay
Oahu, HI





Waldorf – Astoria Monarch Beach
Dana Point, CA

Grand Hyatt
Dallas, TX



Westin
Philadelphia, PA

King Headboard

TV Stand

Round Table

Chair

Nightstand

Credenza

Bed Base





PROJECT DEEP DIVE

Proper | Santa Monica, CA

Proper
Santa Monica, CA



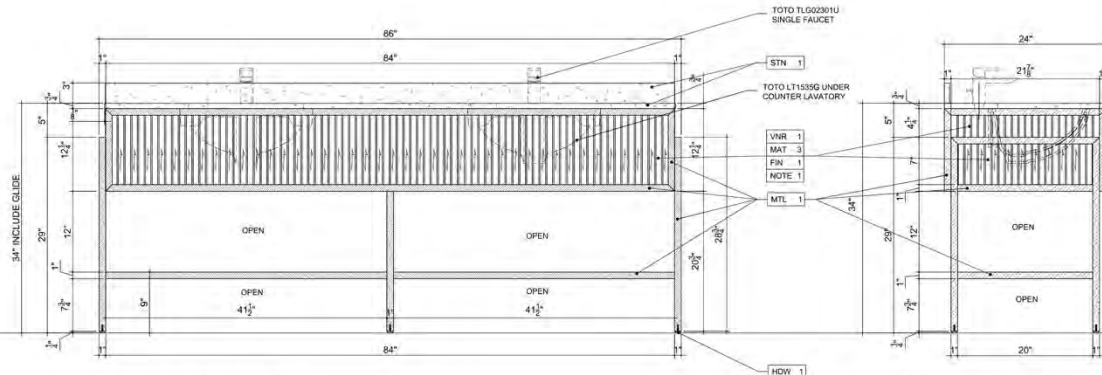
Proper
Santa Monica, CA



Proper
Santa Monica, CA

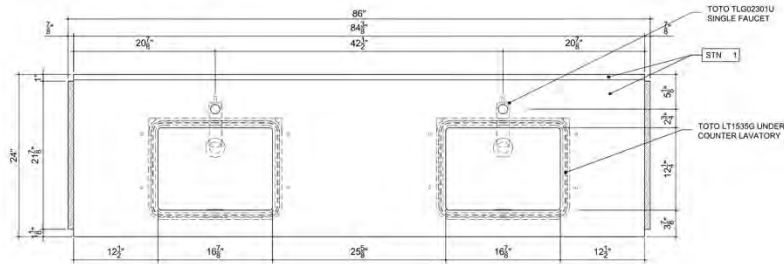


*** STONE TOP AND BACK SPLASH TO BE SHIPPED LOOSE



A FRONT VIEW
NOT TO SCALE

C SIDE VIEW
NOT TO SCALE



B PLAN VIEW
NOT TO SCALE



PH: 628.622.1922 OR
847.887.7862
FAX: 628.622.7851
INFO@MANDYLI.COM
WWW.MANDYLIL.COM

PROJECT
HYATT CHICAGO VANITIES
-BULK

ITEM
VANITY
CG.113.6

MATERIALS AND FINISHES

WOOD VENEERS
VNR 1 QUARTER CUT OAK VENEER
MATERIAL
MAT 1 PLYWOOD
MAT 2 MOIST RESISTANT PLYWOOD, SEALED WITH MATTE WATER RESISTANT FINISH
MAT 3 MDF

FINISH
FIN 1 TO MATCH FN-005, 5% SHEEN

METAL
MTL 1 #304 STAINLESS STEEL IN MATTIE BLACK FINISH

STONE
STN 1 M.L.C. ALTERNATE GW-5133 QUARTZ POLISHED WITH SEALER

HARDWARE
HDW 1 ADJUSTABLE LEVELER

NOTES
NOTE 1 WOOD VENEER PANEL WITH RIBBED DESIGN.

DIMENSIONS
86"W x 24"D x 34"H

DRAWN BY AP
DATE 05.31.22
PROJ. MGR. Allison
REVIEWED
APPROVED
REV. 1 06.21.22 REV. 2

APPROVAL INDICATES THAT ALL INFORMATION CONTAINED HEREIN HAS BEEN REVIEWED AND APPROVED FOR CONSTRUCTION. ALL CHANGES MUST BE APPROVED BY THE PROJECT MANAGER AND SUPERVISOR. ALL SHOP DRAWINGS AND SUBMITTALS MUST BE APPROVED BY THE PROJECT MANAGER AND SUPERVISOR. ANY MODIFICATIONS MAY BE MADE TO CONSTRUCTION DETAILS AS NECESSARY.

DRAWING IS COPYRIGHT © MANDY LI COLLECTION

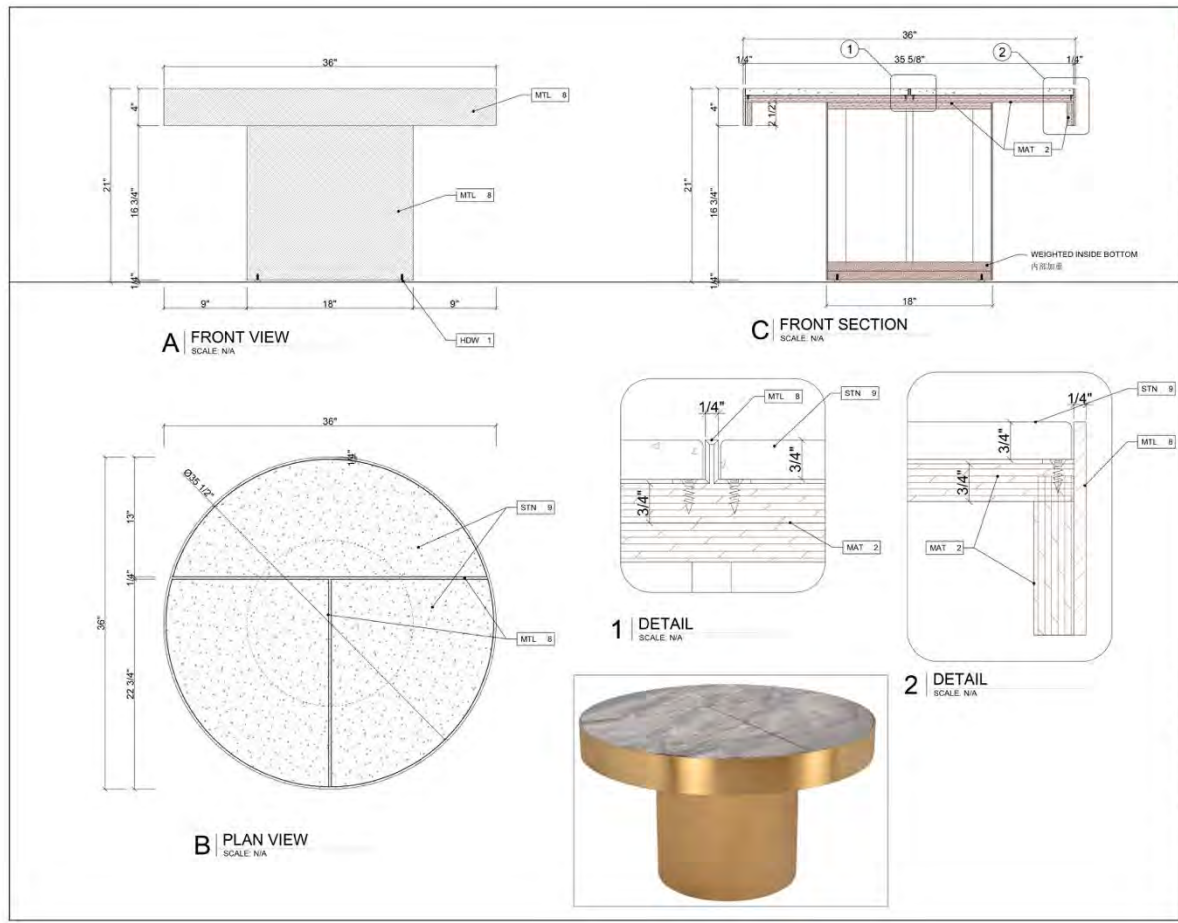
QTY 1

PAGE NUMBER

1 OF 3

FOR PRODUCTION 06.29.22





MANDY LI COLLECTION
 PH: 626 451 1922 OR 867 887 8862
 FAX: 626 457 1661
 INFO@MANDYLI.COM
 WWW.MANDYLICOLLECTION.COM

PROJECT
VENETIAN - TYPICAL - WATG

ITEM
COFFEE TABLE
F-608

MATERIALS AND FINISHES

MATERIAL
 MAT 2 PLYWOOD
 STN 9 MLC ALTERNATE 3/4" THICK MARBLE

METAL
 MTL 8 STAINLESS STEEL FINISH TO MATCH MLC R25-002

HARDWARE
 HDW 1 TEFLON ADJUSTABLE LEVELER

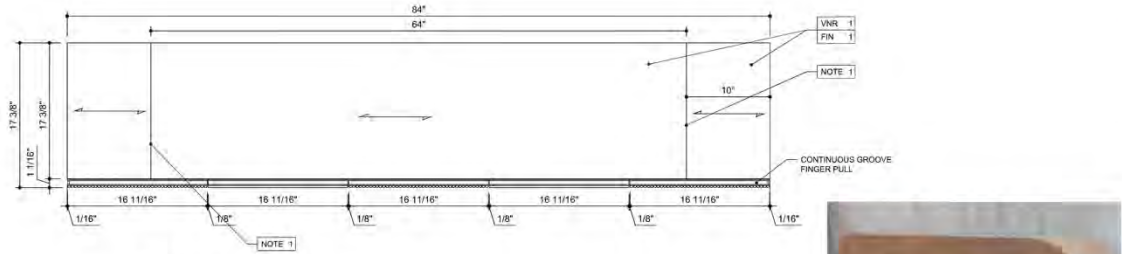
DIMENSION
 36" DIA X 21" H

DRAWN BY AP
DATE 04.28.23
PROJ. MGR. CONNIE
REVIEWED
APPROVED
 REV. 1 REV. 2

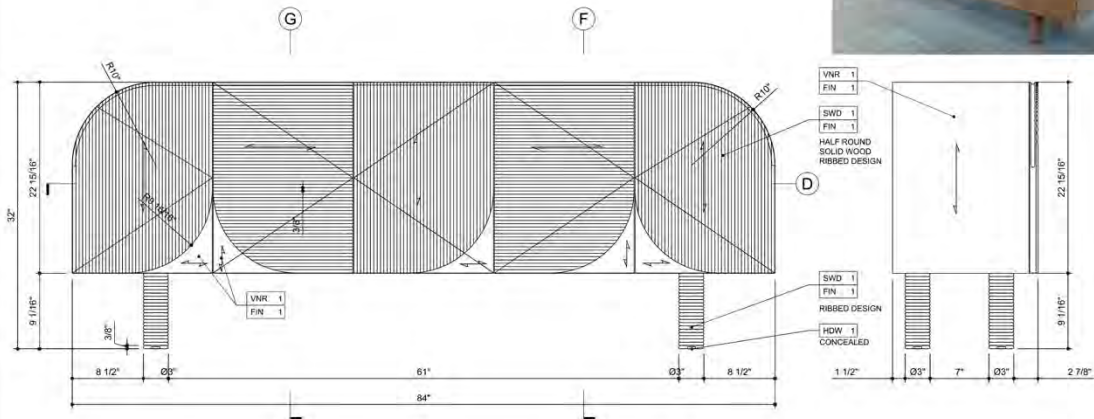
APPROVAL INDICATES THAT ALL INFORMATION CONTAINED WITHIN THIS DRAWING HAS BEEN AGREED UPON AND SUPERSEDES ALL OTHER SPECIFICATIONS AND PURCHASE ORDERS. MAJOR MODIFICATIONS MAY BE MADE TO CONSTRUCTION SETS AS NEEDED.
 DRAWING IS COPYRIGHT OF MANDY LI COLLECTION.

QTY 1
PAGE NUMBER 1 OF 1
 FOR PRODUCTION 06.16.23





A PLAN VIEW
SCALE: N/A



B FRONT VIEW
SCALE: N/A

C SIDE VIEW
SCALE: N/A



PH: 626 457 1622 Or
626 407 8863
Fax: 626 457 1651
info@MandyLiCollection.com
www.MandyLiCollection.com

PROJECT
PROPER, SANTA MONICA, CA

ITEM
CONSOLE
GR-112.7F

MATERIALS AND FINISHES
SOLID WOOD
SWD 1 OAK SOLID WOOD
WOOD VENEER
VNR 1 OAK FLAKE VENEER
MATERIAL
MAT 1 PLYWOOD
MAT 2 MDF
FINISH
FIN 1 LIGHT WIRE BRUSHING FINISH
MATTE SHEEN
HARDWARE
HW 1 ADJUSTABLE LEVELER
NOTES
NOTE 1 SMALL V GROOVE
NOTE 1 DOVETAIL DRAWER BOX
WITH SILENT MOUNT FULL
EXTENSION SOFT CLOSING
GLIDE
DIMENSIONS
84"W x 17.308"D x 32"H

DRAWN BY AP
DATE 04.08.26
PROJ. MGR.
REVIEWED
APPROVED
REV. 1 REV. 2

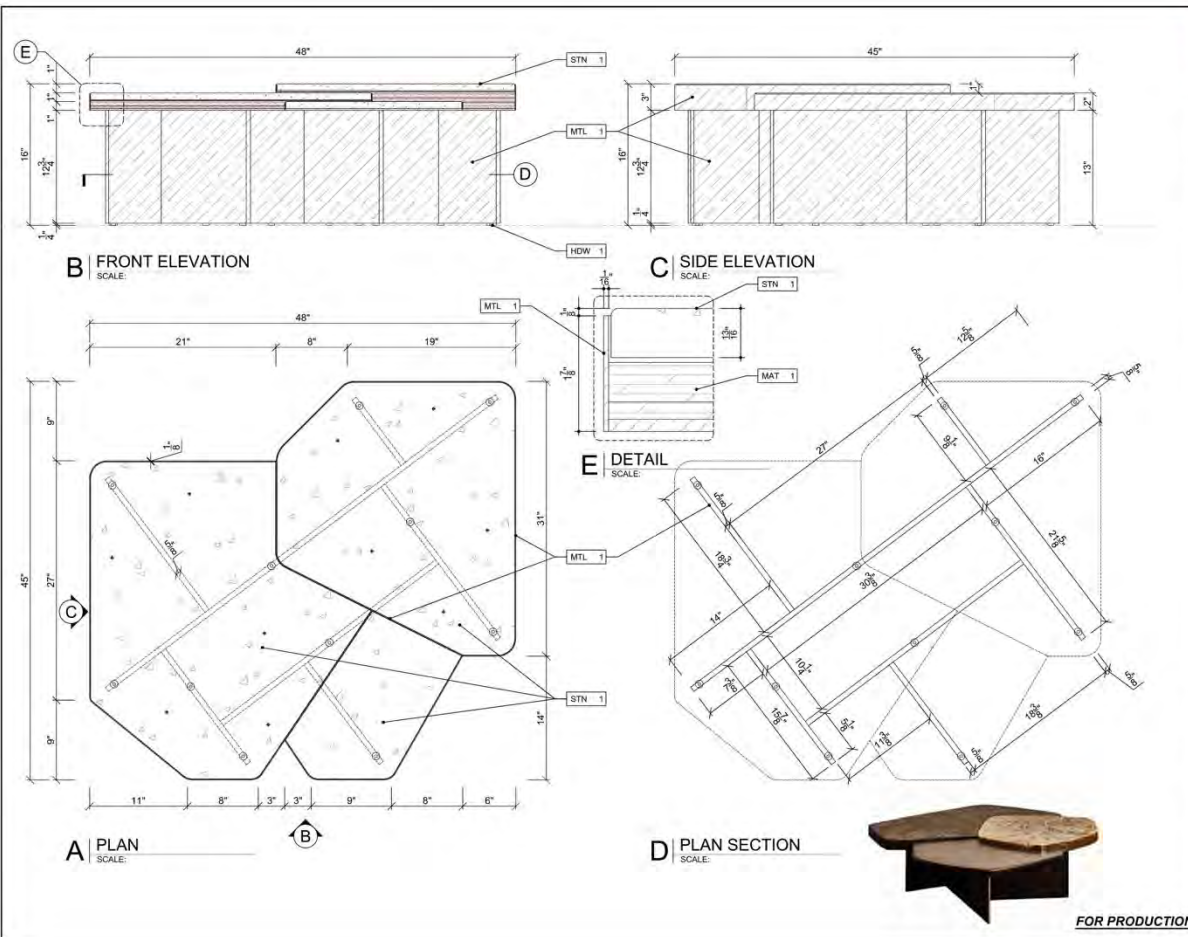
APPROVAL INDICATES THAT ALL INFORMATION
CONTAINED WITHIN THIS DRAWING HAS BEEN
AGREED UPON AND SUPERSEDES ALL OTHER
SPECIFICATIONS AND WORKMAN'S ORDERS. WORK
REQUIREMENTS MAY BE MADE IN CONSTRUCTION
DETAILS AS NEEDED.
DRAWING IS COPYRIGHT OF MANDY LI COLLECTION.

QTY

PAGE NUMBER

1 OF 2





PH: 624 437 1822 Or
817 497 8663
Fax: 624 437 1611
info@MandyLiCollection.com
www.MandyLiCollection.com

PROJECT
2025 BDNV

ITEM
COFFEE TABLE
4

MATERIALS AND FINISHES
MATERIAL
PLYWOOD
METAL
STAINLESS STEEL WITH
BLACK POWER COAT
SATIN
STONE
MLC ALTERNATE JHJ-1110
QUARTZ WITH EASED
POLISHED EDGE
HARDWARE
ADJUSTABLE LEVELER

DIMENSIONS
48"W x 45"D x 16"H

| | |
|------------|----------|
| DRAWN BY | TONY Z |
| DATE | 05.07.25 |
| PROJ. MGR. | LILY |
| REVIEWED | |
| APPROVED | |
| REV. 1 | REV. 2 |

APPROVAL INDICATES THAT ALL INFORMATION CONTAINED WITHIN THIS DRAWING HAS BEEN CHECKED UPON AND SUPERSEDES ALL OTHER SPECIFICATIONS AND PURCHASE ORDERS. SINCE MODIFICATIONS MAY BE MADE TO CONSTRUCTION DETAILS AS NEEDED, DRAWING IS COPYRIGHT © MANDY LI COLLECTION

QTY
1

PAGE NUMBER

4 OF 20

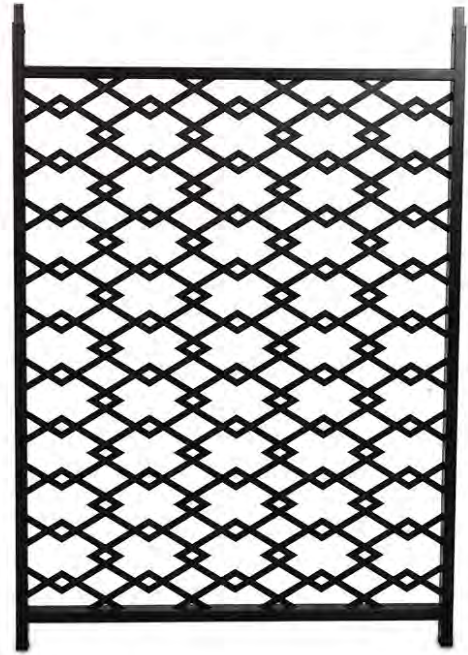
FOR PRODUCTION

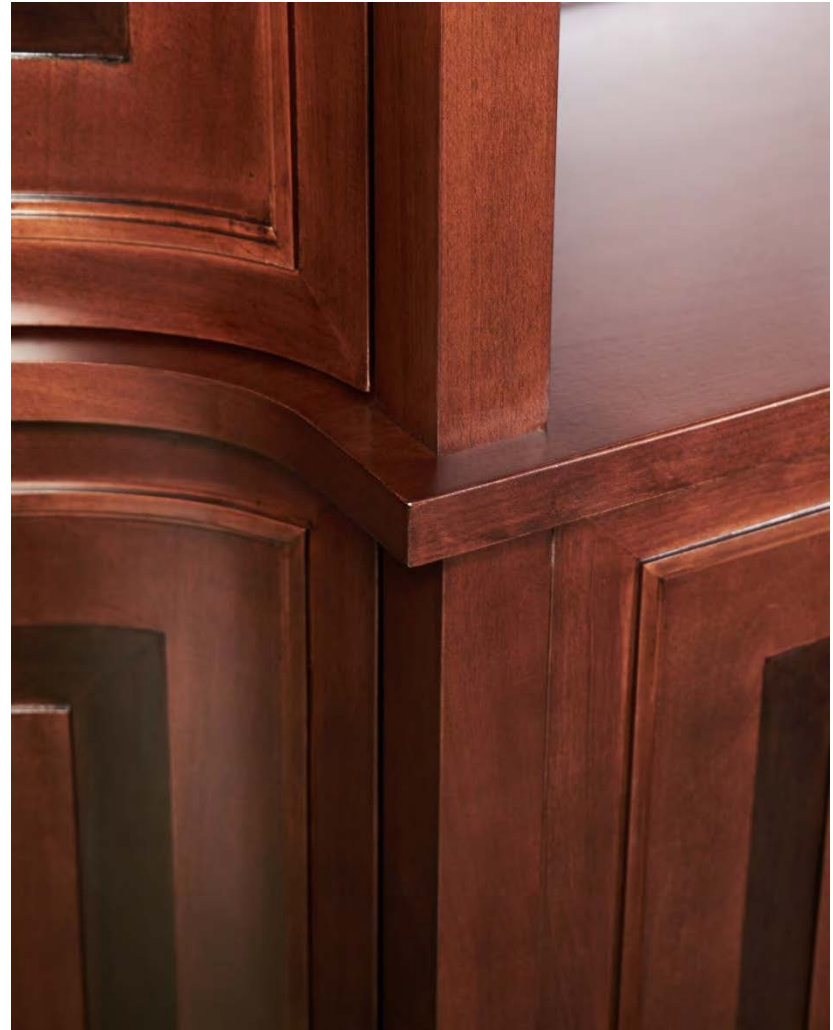
















PROJECT DEEP DIVE

Opal | San Francisco, CA

Opal
San Francisco, CA



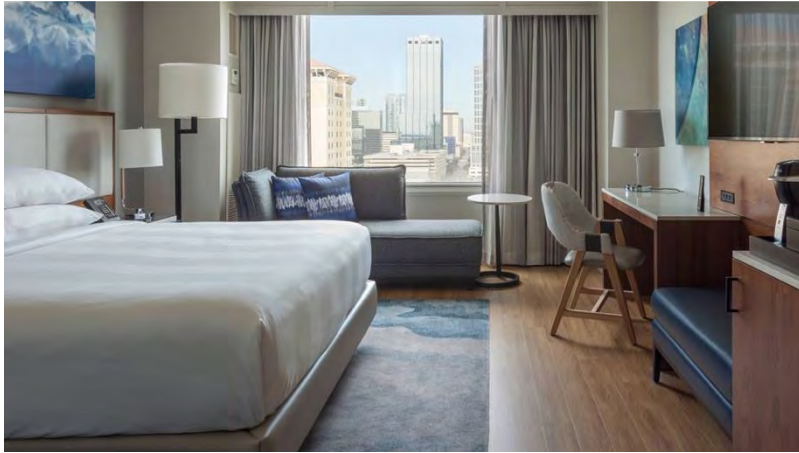
Opal
San Francisco, CA



Opal
San Francisco, CA



Full Scope Capability



Marriott Tampa Waterslide
Tampa, FL

1. Headboards
2. Coffee Tables
3. Desks
4. TV Wall Panels
5. Mini-Fridge Cabinets
6. Nightstands



Hyatt Regency Galleria
Houston, TX

- | | |
|--|--|
| <ol style="list-style-type: none"> 1. Sectional Sofas 2. Coffee Tables 3. Lounge Chairs 4. End Tables 5. Cocktail Tables 6. Chaise Lounges 7. Benches 8. Bar Stools 9. Console Tables | <p>PRESIDENTIAL SUITE</p> <ol style="list-style-type: none"> 10. Dining Table 11. Headboard 12. Bed Platform 13. Side Table |
|--|--|



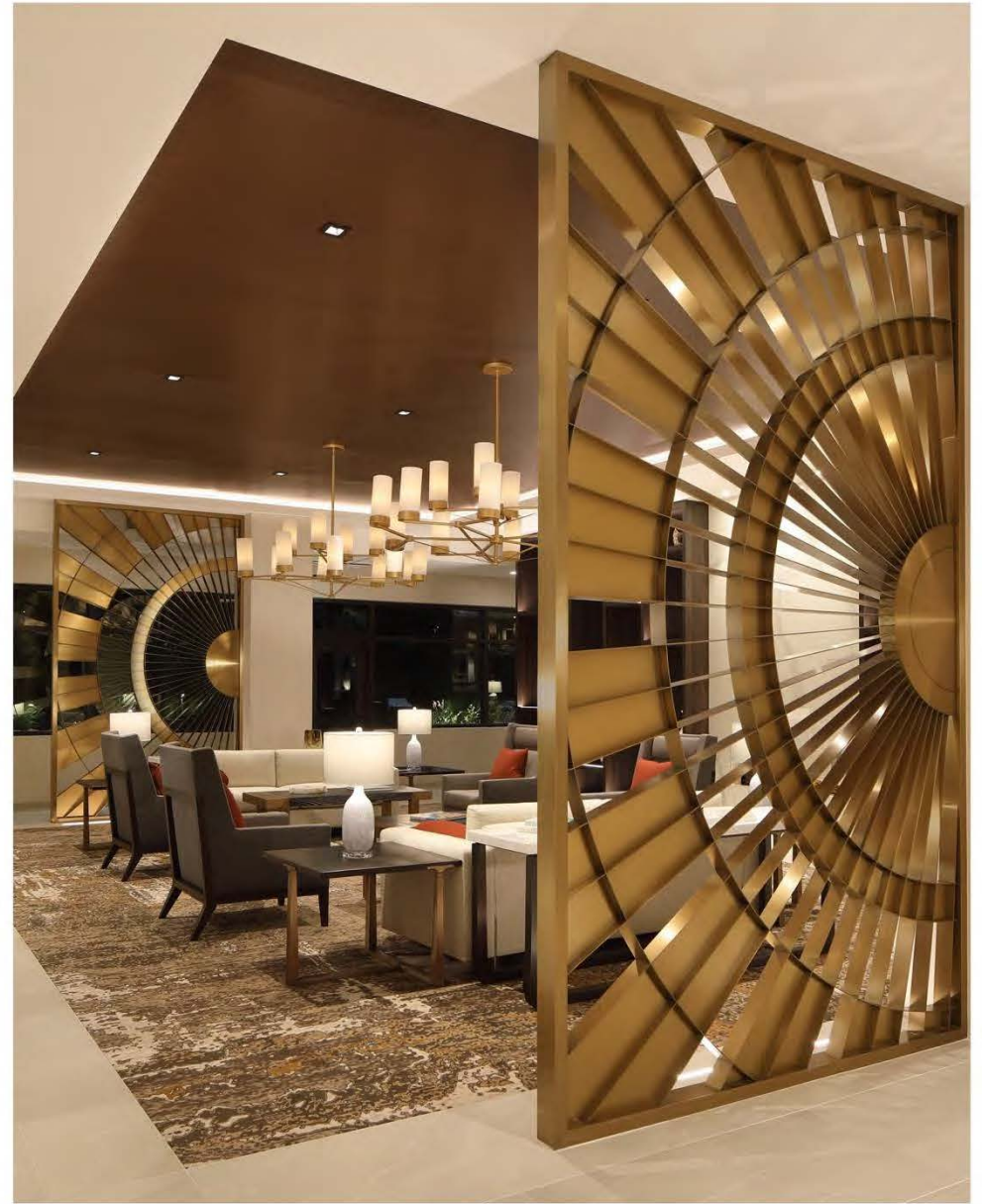
Bluegreen Vacation Fountains, Bldg. 9
Orlando, FL

- | | |
|---|---|
| <ol style="list-style-type: none"> 1. Sectional Sofas 2. Coffee Tables 3. Dining Tables 4. Dining Chairs 5. End Tables 6. Nightstands | <ol style="list-style-type: none"> 7. Bar Stools 8. Side Tables 9. Consoles 10. Credenzas 11. Dressers |
|---|---|





Global Ambassador | Phoenix, AZ



The Watermark at San Jose | San Jose, CA



Marriott Vacation Club — Oceanwatch Villas

Myrtle Beach, SC

Challenge

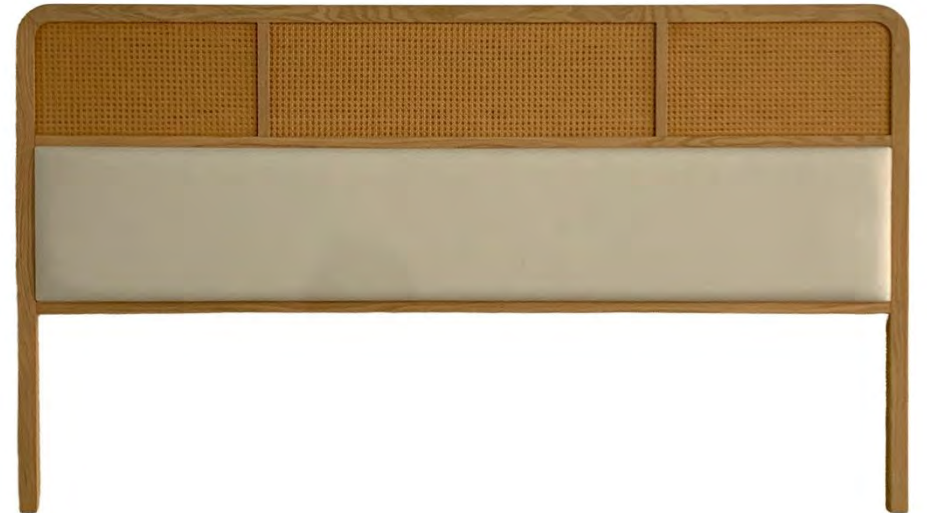
2025 tariff shift and Vietnam factory overload created schedule risk

Solution

Rebalanced production between Vietnam and China to maintain control

Result

Project delivered on time with consistent quality across both locations



The Biltmore
Phoenix, AZ

Delivered with Precision. Built for Hospitality.





MANDY LÍ[®]
C O L L E C T I O N

Making **Your Designs** Come to Life